

THE ADVENTURES OF BULAND BABU

SUPERHEROES **AT** **WORK**



THE SANITATION STAR CAST



BULAND BABU

AN ORDINARY CITIZEN WHO HAS THE EXTRAORDINARY DETERMINATION TO DO THE BEST FOR HIS CITY AND FELLOW CITIZENS.. AN EVERYDAY HERO!



RAHUL

AN ENGINEER WHO HELPS THE SANITATION DEPARTMENT DESIGN AND BUILD THE BEST POSSIBLE SOLUTION FOR YOUR WASTE!



MRS. SWATI

THE LOCAL CORPORATOR, SHE MUST KEEP THE PEOPLE HAPPY AND HELP THE CITY GROW!



RAJU BHAI

THE SEWER ENTRY PROFESSIONAL, WHO HAS BEEN DOING HIS JOB LIKE A SUPERHERO!



TOPMAN

THE TOP MAN IS A LADY, WHO MONITORS AND MANAGES THE SANITATION TEAM!



TWO SCHOOL CHILDREN ARE WALKING, WHEN SUDDENLY ONE OF THEM SAYS...

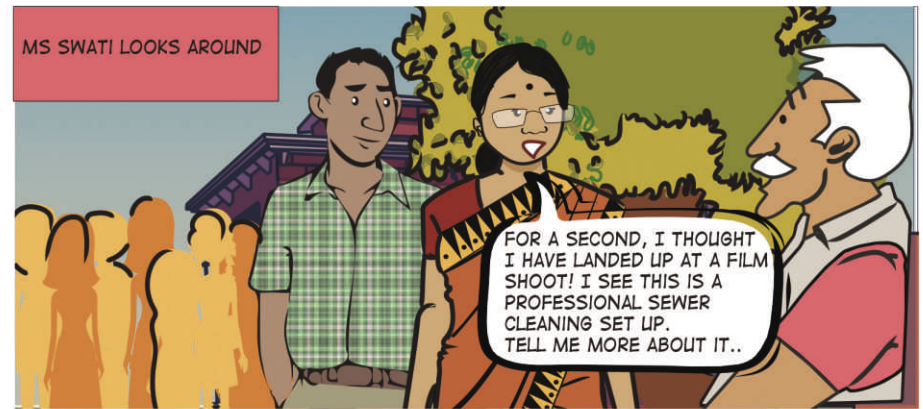


AS THEY NEAR THAT PLACE, THEY MEET OTHER PEOPLE WHO ARE STANDING NEAR A BARRICADE.



ONE OF THE SCHOOL KIDS ASKS A BYSTANDER







PAPA, ARE THEY REALLY ASTRONAUTS?

THE CROWD GATHERS AROUND NEAR RAHUL AND BULAND BABU AND LOOK AT THE MEN IN UNIFORM WITH AWE AND WONDER.



HOW IS IT MANAGED SMOOTHLY RAHUL?

THEY ARE PROFESSIONALS FROM E.R.S.U, EMERGENCY RESPONSE SANITATION UNIT. THEY MAINTAIN AND MANAGE SEWER NETWORK AND SEPTIC TANKS. THEY ARE HERE TO TAKE CARE OF THE SEWER LINE BLOCK. BULAND BABU CALLED THEM....

AND THEY ARRIVED VERY PROMPTLY!

WHEN YOU REGISTER A COMPLAINT, THE REQUEST GOES TO THE DUTY SUPERVISOR. HE IS THE ONE WHO DECIDES HOW THE ISSUE HAS TO BE TACKLED. YESTERDAY, THE MOMENT HE CAME TO KNOW ABOUT THE PROBLEM, HE REACHED HERE AND EVALUATED AND IDENTIFIED THE ISSUE.



GET THE S.E.P TEAM READY IMMEDIATELY! HMM EVERYTHING SEEMS TO BE IN ORDER

THE DUTY SUPERVISOR INSTRUCTING TELEPHONE OPERATOR ...DUTY SUPERVISOR OVERSEEING ENTIRE SEWER/SEPTIC TANK ENTRY PROCEDURE TO ENSURE ACCEPTABLE ENTRY CONDITIONS.



MAN CHECKING THE MAINTENANCE HOLE

WHAT IS THE MAN CHECKING?

THE MAN IS TESTING THE MAINTENANCE HOLE FOR
- ANY TOXIC GASES, AMPLE VENTILATION.
AND ENSURING THAT THE OXYGEN LEVEL IS NO LESS THAN 19.5% AND NO GREATER THAN 21% AT ALL TIMES.
-NO RODENTS OR WEAK WALLS THAT CAN COLLAPSE.
- ENSURING THE SEWAGE FLOW HAS STOPPED BY CLOSING VALVES.
- ADEQUATE LIGHT IS AVAILABLE FOR THE MAINTENANCE WORK.



WHY IS THE MAN'S FACE BENT AWAY FROM THE LID OF THE MAINTENANCE HOLE..

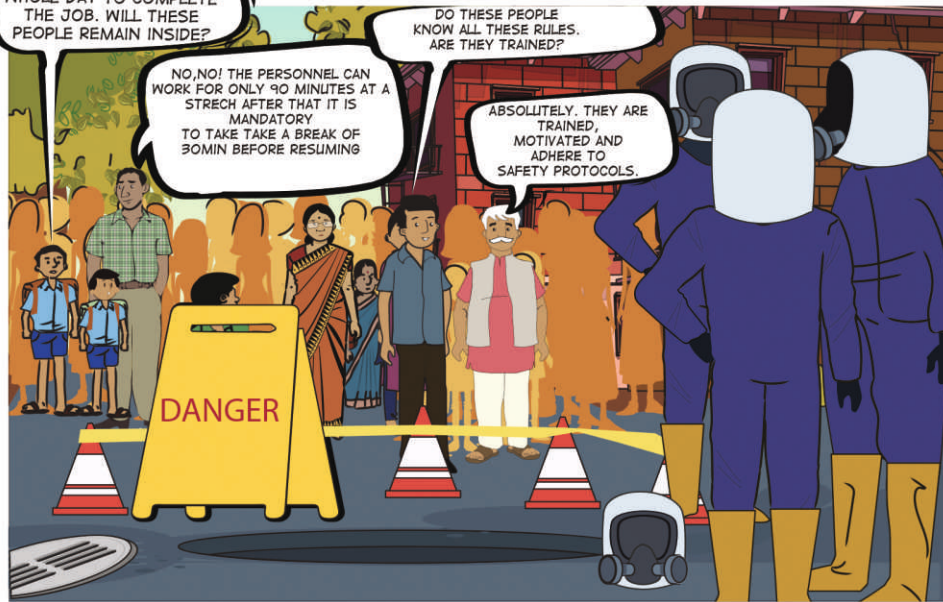
SO THAT THE TOXIC GAS DOES NOT STRIKE HIM; IN FACT, OTHER MAINTENANCE HOLES HAVE BEEN OPENED AN HOUR BEFORE THE WORK STARTED. YOU SEE, THEY HAVE TO BE VERY CAREFUL AND RELIGIOUSLY FOLLOW SAFETY STANDARDS, THIS JOB CAN BE DANGEROUS.

IT MIGHT TAKE THEM THE WHOLE DAY TO COMPLETE THE JOB. WILL THESE PEOPLE REMAIN INSIDE?

NO, NO! THE PERSONNEL CAN WORK FOR ONLY 90 MINUTES AT A STRETCH AFTER THAT IT IS MANDATORY TO TAKE A BREAK OF 30 MIN BEFORE RESUMING

DO THESE PEOPLE KNOW ALL THESE RULES. ARE THEY TRAINED?

ABSOLUTELY. THEY ARE TRAINED, MOTIVATED AND ADHERE TO SAFETY PROTOCOLS.



WHEN MACHINES CAN DO EVERYTHING, WHY DO MEN HAVE TO GO INSIDE THE MAINTENANCE HOLE?

HUMAN ENTRY IS ALWAYS THE LAST RESORT. AFTER INSPECTING THE DAMAGE WE REALISED THE BLOCKAGE COULDN'T BE CLEARED WITH A MACHINE, THAT IS WHY A TRAINED S.E.P WILL HAVE TO ENTER THE SEWER. WE HAVE TAKEN PERMISSION FROM THE RESCUE SANITATION AUTHORITY (R.S.A), WITHOUT THIS NO HUMAN ENTRY IS ALLOWED!

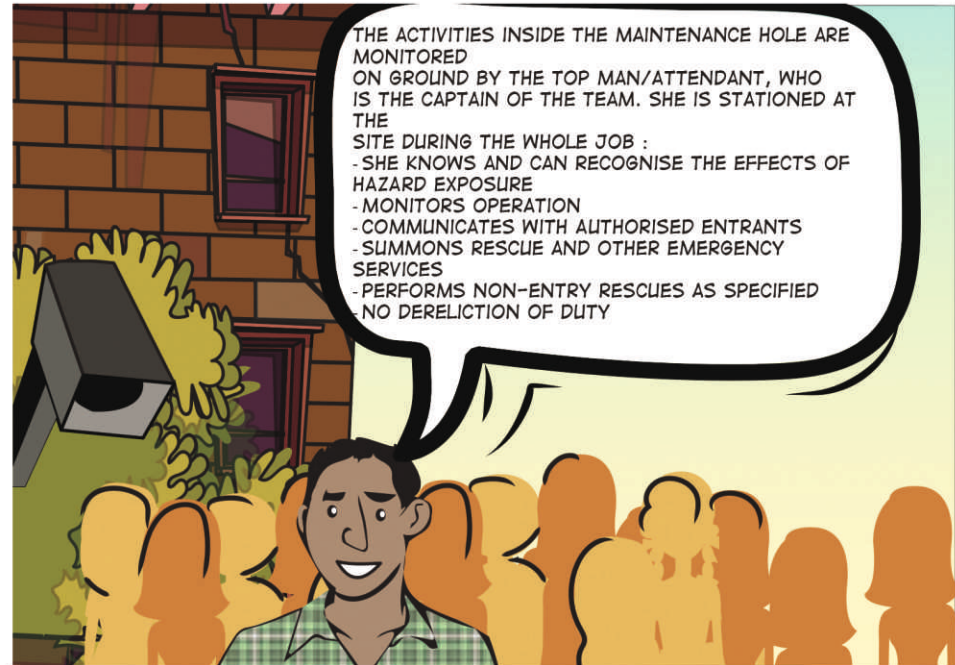


WHAT HAPPENS IF THEY ARE STUCK INSIDE?.

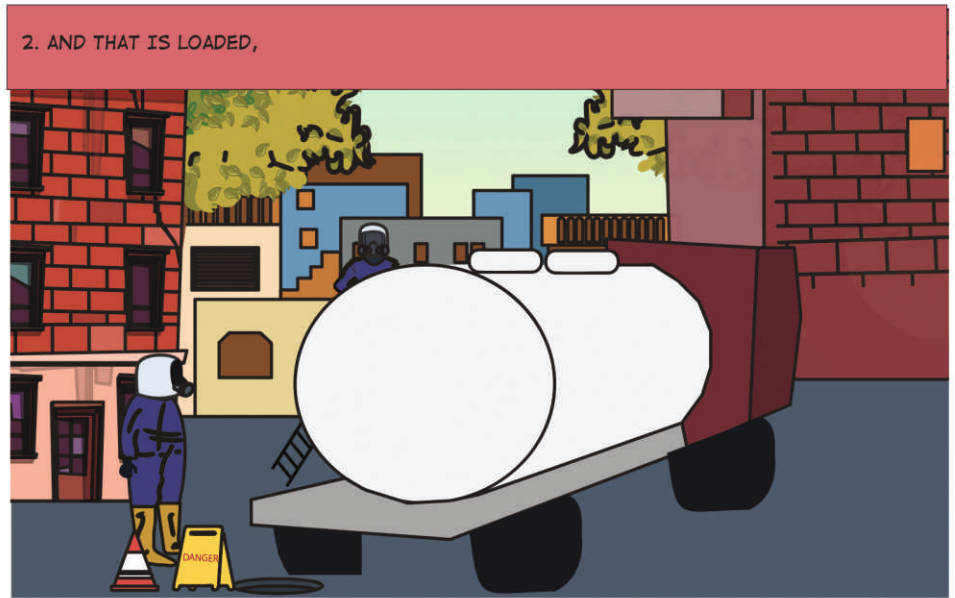
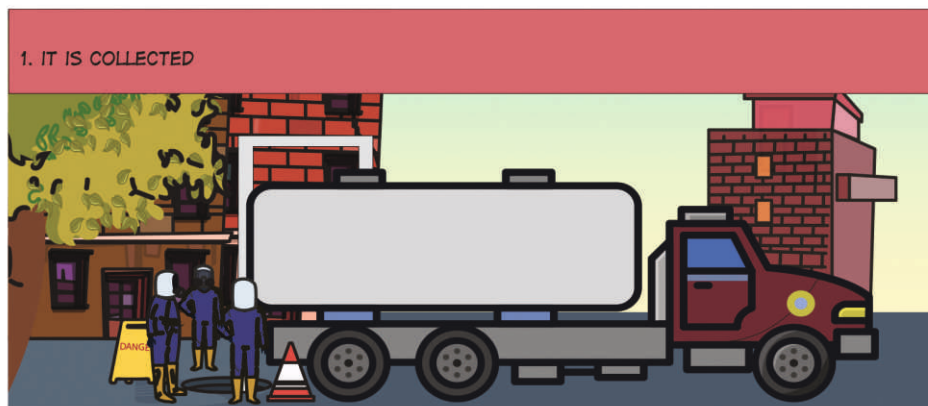
THE SEWER ENTRY PROFESSIONALS - KNOW PROCEDURES FOR COMMUNICATING WITH THE TOP MAN/ATTENDANT - CARRY 2-WAY RADIOS, - THEY KNOW HOW TO ALERT AND RESCUE THEMSELVES - OR MAKE A QUICK EXIT IN CASE OF DANGER



THE ACTIVITIES INSIDE THE MAINTENANCE HOLE ARE MONITORED ON GROUND BY THE TOP MAN/ATTENDANT, WHO IS THE CAPTAIN OF THE TEAM. SHE IS STATIONED AT THE SITE DURING THE WHOLE JOB :
- SHE KNOWS AND CAN RECOGNISE THE EFFECTS OF HAZARD EXPOSURE
- MONITORS OPERATION
- COMMUNICATES WITH AUTHORISED ENTRANTS
- SUMMONS RESCUE AND OTHER EMERGENCY SERVICES
- PERFORMS NON-ENTRY RESCUES AS SPECIFIED
- NO DERELICTION OF DUTY



RAHUL POINTS TOWARDS A CCTV CAMERA..



4. AND IT IS SAFELY DISPOSED OF AT A PRE DESIGNATED LOCATION.



11

IN FACT ALL
- THE PROTECTIVE GEAR,
- MACHINERY AND
- EQUIPMENT IS THOROUGH-
LY
CLEANED AFTER THE
MAINTENANCE OPERATION.



PROTECTIVE GEAR

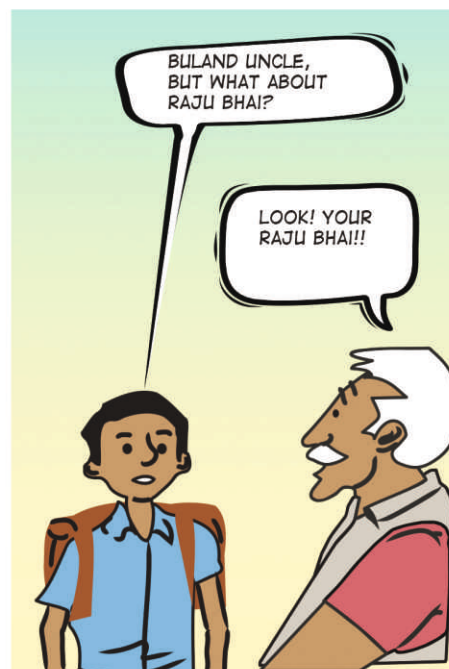


MACHINERY



THE EQUIPMENT

12



IMPORTANT PROCESSES

- 1 .SANITATION STAR CAST...PAGE...1.
- 2.WHAT IS ERSU...PAGE...5.
- 3.IMPORTANT PROCESSES.....PAGE...5.
- 4.HAZARDS & PRECAUTIONS...PAGE...6-8.
- 5.MANAGING THE DEBRIS.....PAGE....9-11...
- 6.DEDICATED HELPLINE.....PAGE.....13.

**COMING
SOON!**

MORE ADVENTURES
OF BULAND BABU...



BILL & MELINDA
GATES *foundation*

